

BODMIN WAY

NEWSLETTER - JULY 2020

Introduction and welcome

How will Bodmin fare through the post-lockdown period? We all appreciate the economic and social challenges upon us. What can we do to improve our prospects?

Public investment will be important. We are not going to emerge if we simply rely on the resources we have within the town. But public money will not be enough to root our long-term revival. We shall need the best of our entrepreneurial energies to carve out jobs and opportunities.

Compassion will be needed in abundance. If we have learned anything from sharp recessions, it is that the suffering of its victims is real. It is easy to criticise the desperate actions of others when they are under strain. Bear in mind that most of us struggle when stress continues unabated. We should be swift to help and slow to judge.

Leadership will be key. Not that we need a charismatic guru to arise from amongst us. Rather, the leaders we do have will need to collaborate in initiatives of high ambition. We already have the Bodmin Vision. This is a good platform to build on. The conversations about this continue

in the background. Those of us involved need now to adapt our thinking to these new circumstances. It will take more vision, more energy and more commitment to enable Bodmin to rise than we first thought.

Bodmin will be shaped largely by how we now act. The time to grasp this challenge appears to be right now.



Revd Paul Holley

Team Rector, Bodmin Team Ministry



**PREVIOUS NEWSLETTERS
- CLICK HERE**

CONTACT US

We would be pleased to help

Tel: 07713 288 340

Bodmin.Teamministry@gmail.com

Team office (currently closed)

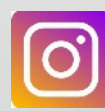
Church Square, Priory Road, Bodmin,
Cornwall PL31 2DP

Editor: Dave Birch Tel:07484 857420

News@BodminWay.Org

SOCIALISE

You can keep in touch with news and events from Bodmin Way on FaceBook and Instagram.



www.Facebook.com/BodminWay

www.Instagram.com/BodminWay

SUBSCRIBE

If you have been sent this newsletter via email then you are already in our mailing list.

For any additions or changes please email Dave the editor at

News@BodminWay.Org

ENABLING YOUR WELLBEING

WITH KINDNESS

Be kind

The theme of Mental Health Awareness Week (18-24 May) was Kindness as a response to the coronavirus outbreak. Why is it that we need a special week to be kind? Why is it that the tension of the virus and the need for normality is pushing many to be kind but many others to act in a negative way?

Everyone deserves kindness not just in one week and everyone who is doing the opposite needs to pause and reflect on 'is this the way they would want to be treated'. As the editor of your magazine my learning from 42 years of business is that if someone acts nasty to you then being nasty back just makes things worse.

Re:Kind

A new group called Re:Kind has been established recently by three women specialising in wellbeing, who all recognise the importance of kindness to aid positive mental health and emotional resilience (watch this useful resilience [video](#)).

I spoke with [Amy Fox](#) and Cat Packer from Re:Kind who explained that their mission is to rekindle kindness in the communities in which they live through a variety of small projects.

The first project was a random act of kindness in Bodmin through the distribution of delicious biscuits and cupcakes to make people smile. 40 nominations were collected on social media of people not normally recognised or just needing a hug. The picture opposite shows the rather delicious kindness treats that were baked by Kirsty Miller. She is a wellbeing specialist who also bakes delicious treats for her community through her baking project For Goodness Cake.



Pentreath Ltd. exists for people living with mental health and emotional difficulties.

They offer support to help people believe in their own potential and achieve their vocational goals, whatever challenges they face.

Their role is about promoting good mental health through personal development, education and employment. <https://pentreath.co.uk/>



ROUTES

EXPLORING THE COUNTRYSIDE, ENJOYING OUR HERITAGE

BODMIN WAY

The walking routes of the Bodmin Way are open. You can experience the great outdoors with its stunning scenery and rich cultural heritage, enhance wellbeing and enjoy time spent with others - socially distancing of course. Learn more at www.bodminway.org/routes

SAINTS WAY

The Saints' Way Trail crosses mid-Cornwall from coast to coast covering approximately 30 miles / 48 Km from the harbour town of Padstow in the north to the southern port of Fowey. The route starts at the harbour in Padstow and heads south through Little Petherick, St Breock Downs and Lanivet where it meets the Bodmin Way. The trail then joins the Fowey River near Lostwithiel where you can walk along the river before reaching Fowey. Find more information on the [Visit Cornwall website](#) and some interesting history on [Wikipedia](#).

TRAFALGAR WAY

The Trafalgar Way is the route of an epic journey of a naval messenger who brought home the news from The Battle of Trafalgar. He travelled from Falmouth, through Bodmin to London, changing horses every 10 to 15 miles and made at least 21 stops. A plaque near the Shire Hall in Bodmin marks his journey and tells the story. Learn more on the [Trafalgar Way website](#). Picture below © Piers Sanford.



ADVENTURES

Are you looking for new places to explore or an exciting challenge? Perhaps just a fun game or past-time to do while you spend time with children or grandchildren? Follow [this link](#) to learn about the ways you, your family, friends and colleagues can get more from The Trafalgar Way.

COMPETITION

The [Art and Photography competition](#) invites entrants to explore and capture the route and geography of The Trafalgar Way in picture form,

"The story behind The Trafalgar Way reminds us of the timeless connection between our maritime history and our island nation. By entering this competition you can support British heritage and help keep this fascinating tale rolling for future generations".

Kathy Brown,
Director of The Trafalgar Way,

THE BELLS WILL RING AGAIN

AT OUR BEAUTIFUL PLACES

Bell ringing - July 1st to 8th

Keeping within the current guidelines of the Central Council of Church Bell Ringers set down for bell ringers during the present crisis, St Petroc's ringers will be ringing the curfew bell during the week that would have coincided with Heritage week.

This consists of ringing the number 6 of our 8 bells for 5 minutes and then striking the relevant date on the tenor, the largest bell. This will take place from Wednesday 1st July, through to Wednesday 8th July at 8pm each night.

Originally this was rung every night by a ringer at Bodmin from medieval times up until 1995 when it became impractical to do so, since then it has only been rung during Heritage week. Originally rung to warn people of the town to damp down their fires. There is a mention of this in the journal of John Wesley who followed the sound of the Bodmin curfew bell when he and a friend were lost on the moor.

The last known person to be retained by the town council as curfew ringer was a gentleman by the name of Charlie Hoskin, who I believed lived in St Nicholas Street and who's walking stick still resides in the tower.



Thanks to Sophie Sweetlove and Andrew Harris who will carry out this task.

Paul Scoble, Tower captain.



During 2019 we ran a weekly picture quiz of interesting things to be found along the routes of the Bodmin Way and in our churches. You can find these pictures on [Instagram](#).

LOOKING AFTER YOURSELF AND NATURE



**Cornwall
Wildlife Trust**

Activities for families

At the beginning of the Coronavirus lockdown the Cornwall Wildlife Trust realised they needed to be there for wildlife, wildlife lovers and those isolating at home. Without the ability to venture too far, they acted fast to provide things to see, do, read, watch and make from home that would maintain a connection with nature.



There are countless supporters building hedgehog homes, sending in pictures of wildlife they have seen in their gardens, engaging with online talks and generally appreciating Cornwall's wildlife in new and deeper ways.

They have a good mix of activities for families, activities for adults (although the adults very much seem to enjoy the children's activities too!), in depth video discussions, blog posts, spotter guides and worksheets.

Find out more at:

www.cornwallwildlifetrust.org.uk/coronavirus

If any of our readers wish to let them know what they have been up to, they would love to hear from you by email or their social media channels [FaceBook](#) and [Twitter](#).

Wild Cornwall

The Spring edition of [Wild Cornwall](#) (normally a members exclusive magazine) is online for all to enjoy. It is packed with all the wildlife happenings around Cornwall.

Newsletter

They have an email newsletter which goes out monthly, packed full of news, sightings, activities, events and tips. If you haven't subscribed already it would be great if you could add your email address to keep in touch. [Sign up here](#).

Nature Reserves

Why not visit one of the many nature reserves in Cornwall managed by the CWT. Find out more [online](#). The Nearest to Bodmin are:

- Helman Tor - a large wetland complex spreading from the slopes of Helman Tor. The landscape here has been characterised by tin streaming which creates hummocks and hollows. These determine where the areas of wet and dry heathland and grassland are, together with large areas of wet woodland and open water. Sundews can be found in wet areas amongst sphagnum mosses and produce small white flowers from June to August. There are the remains of a Neolithic hill settlement which is a Scheduled Ancient Monument.
- Cabilla and Redrice Woods - One of the largest and possibly finest ancient woodlands in Cornwall. This reserve boasts an extensive area of mixed woodland with ancient oak and hazel coppice, as well as river and wetland belts. It provides a suitable habitat for the dormouse and the pied flycatcher is a frequent visitor. The rare blue ground beetle occurs here and only a few other locations around Dartmoor and Bodmin Moor.

THE YOUNG ONES

GROWING UP IN EXCEPTIONAL TIMES

Lanivet & District Under Fives

The pre-school reopened on June 4th, beginning with school leavers. These children will be supported with their transition to Lanivet Primary School. The younger children will be invited back at a later date.

We put out a plea for donations of flowers for the children to plant in our beautiful garden and window boxes. We were delighted to receive a number of plants- with stunning results to brighten up our outside spaces.

If you are walking along The Bodmin Way, please give us a wave as you go past.

Jessica Finnemore, Chairperson
Lanivet & District Under Fives



Superheroes brightening their day

The picture below shows Adam Swatton, Scott Cavill and Dave Hoskin setting off to deliver our mail in costume to lighten our lives. Carole Hoskin told me "It started with a few of them answering a message on FaceBook of a little lad who was finding life difficult in lockdown and 3 posties turned up in superhero costumes, they recently delivered a birthday card to him also.



Then my husband and his colleagues have continued to dress up once a week to bring a smile to families on their post round.

Life can be quite isolated on their rounds and they have had a tremendous amount of support and response from them".

Well done to all our key worker superheroes.

HISTORY

FASCINATING INFORMATION TO ENLIGHTEN US

THE BODMIN STOP LINE

This was a defensive line from Padstow through Wadebridge, Bodmin and Lostwithiel to Fowey. The first pillboxes, roadblocks and gun batteries were built in the summer of 1940 and construction continued through the year into 1941. Not all of what was planned was actually built.



This video-book style presentation (on [YouTube](#)) looking at the history of the Bodmin Stop Line and seeing what remains today focuses on the anti-tank island of Bodmin, a strategic and military town on the main A30 through Cornwall.

It also looks at three of the Auxiliary Units set up either side of the line. It uses historical photographs and film footage, archive documents, maps and eyewitness statements to examine the defences of the line.

The Bodmin Stop Line is the setting for the historical novel *No Small Stir* - currently the only published work on the Line.

The series of videos is made to honour all those who served to defend the cause of freedom and democracy and remember those who gave their lives that we may live freely today.

Phil Hadley Nosmallstiruk@yahoo.com

MEMORIES

[Mike Cummings](#) provided an insight to war time in Bodmin. "I was only 7 years old at the time, but Bodmin had one bomb dropped on it in 1942 at the bottom of Mill street. It hit the Primrose Dairy and killed 9 people.

The 115th Infantry Regiment, Anti-Tank Company USA were stationed at Walker lines camp behind Victoria barracks and on the beacon, also they used Kinsman's garage higher Bore street as a motor pool. The Regiment also had a Medical Detachment, a Cannon Company, a Service Company & an HQ Company in Bodmin.

Just after the war we used to play on Tregullon moor, there was a mock army camp there with canvas vehicles and gun emplacements.

We went to visit my Aunt who lived in Polmear road Par opposite Par beach, behind her house was a lane leading up to Castle Dore. In the lane a concrete block wall was built halfway across and a bit further on another from the opposite side making a kind of chicane"

The photo below is of the VE party at Kinsmans garage Higher Bore Street in Bodmin. Mike and his brother are standing at the front.



CELEBRATING LIFE

AND FINDING OUR ANCESTORS

Nanstallon cemetery

I must have been mad when I took on a challenge last summer that was entirely my own doing. There was a village project to re-record all the burials and record the memorials in Nanstallon cemetery. They also wanted to find out any interesting facts about those buried there and as I love genealogy I decided to help and find out who was who! Maiden names! Who was married to who etc.

With Lockdown it gave me the chance to finish the document containing 620 people!. (Not all are buried here, some are just mentioned on memorials). If you know anything about genealogy you will know how addictive it is; 2,411 people 9,000 records later. That is only the tip of the iceberg to what could be recorded but you have to stop somewhere!

Sometimes it was quite a challenge to find people but with perseverance I usually found them, (there are one or two still outstanding!). It was interesting finding who was related to who.

The sad parts were those of the babies and children, some who are interred with someone else!

Of course the most infamous little girl buried here is Edith Mary Parkin who was murdered in the village on 15 June 1922, age 9 years. There was a suspect but there was not enough evidence to convict him.

We are asking for any relatives of anyone in the cemetery who has any interesting stories to get in touch.

[Sheila Trethewey](#)



Roll of Honour

In addition to the cemetery there is also the Roll of Honour on the school wall, these men didn't die in the war they are remembered here for taking part!

Unfortunately there is not much information about them just an initial and a surname and I would like to find out who they were. So any information would gratefully be received.

Our loved ones

There is so much we discover about someone's life when it comes to an end that is well worth celebrating.

Do please contact Dave our editor (news@bodminway.org) with a photo and up to 100 words to express your memories.

CELEBRATING LIFE

MEMORIES OF A LOVED ONE

Revd. Richard Bryan Dorrington

Richard was born in Bodmin on 17th June 1948. He attended St Petroc's primary school until he was 7 when he, together with sisters Janet and Joy and parents Bill and Gwen moved to Wolverhampton.

He began an engineering apprenticeship at Rubery Owen Ltd and was an engineer until 1979 when he and the family moved to Lincoln where he began training for the ministry at Lincoln Theological College.

Richard met Bryony on a bell ringers outing in September 1967 when she was 16 and he was 19. Both of them felt that they were destined to meet and this was not easy considering Bryony was a ringer in Surrey and Richard was a ringer in the West Midlands!

Richard held the position of Ringing Master and Tower Captain in many towers and Guilds and Associations and represented Shropshire on the Central Council of Church Bell ringers whilst living in the County.

They married at All Saints church, Kingston-upon-Thames in Surrey on 5th September 1970, settling into their married life in Shropshire. Rebecca was born in 1977, followed by Nathan in 1979 and Paul in 1984.

At Lichfield Cathedral, Richard was made Deacon in 1981, Priest in 1982 and he was a Curate at All Saints, Streetly. His ministry took him to serve as Rector of Beckbury, Badger and Ryton in Shropshire; Vicar of Geddington and Weekley in Northamptonshire; Rector of Abbots Bickington, Bradworthy, Bulkworthy, Putford and Sutcombe in Devon, finally retiring in June 2013. He then held Permission to Officiate in the Diocese of Truro and loved worshipping at St Petroc's Bodmin, where he himself had been baptised and his parents had married.

He was a family man, and much loved by so many that knew him, the fact that over 160 cards and letters have been received by Bryony speaks volumes.

A gentle man, who whilst a choirboy at St Leonard's Bilston (where he also learnt to ring) always believed that God was calling him into the Ministry of the Church.

He had a wonderful sense of humour. He loved his children and was so proud of everything they have achieved in life. He delighted in his 4 grandchildren: Oliver, Joseph, Ted and Edie and will always love them.

His hobbies included photography (winning several competitions), steam railways, working as a Train Ticket Inspector on the Bodmin and Wenford railway and his fantastic skills in railway modelling resulting in a wonderful layout at home.

How sad that his life has ended in the way it did on 10th May 2020, just a few weeks after being diagnosed with terminal cancer. I will never forget the wonderful person I met 53 years ago on the Croydon bell ringers outing.....all the love we shared and the dreams of celebrating our Golden Wedding in Septemberbut, he lives on in eternity and will be with us always. Richard's funeral took place at Glynn Valley Crematorium on 17th June

The family plans to hold a service of thanksgiving in St Petroc's church on Saturday 8th May 2021 to which everyone is warmly invited to attend.



CONNECTING PEOPLE

ENABLING HELP



The Fare Exchange Bodmin

Great news from the Fare Exchange on June 9th:

“The last few days have been epic and so much work has been carried out. Today we have had 2 more volunteers come to lend a hand with packing and delivery to support the community and again, it’s the youth that have really made a massive effort in this situation. 6 people sorting everything today and all under 27!

Last week we supported 168 just around Bodmin and already those figures have increased. With the support of FareShare South West we will be able to continue at least until the end of July when we will assess the situation and find a way to continue. Just over 2 tons of essential items has been given by FareShare **per week** to the community here. Simply amazing.

I can't thank our volunteers enough for the help they give. Battling through their own problems and giving their own time to help others. The young people involved really are an inspiration”

John Lakey.

Royal Mail

Dave Hoskin has been organising food donations to be dropped by Royal mail staff. A man on his post round gave money aimed at someone less fortunate. Dave has gathered items and delivered them to the Fare Exchange to help them out.

Cultivate Cornwall..

Are delighted that they have partnered with Earth23 CIC to launch the Bodmin Community Phone Line.

Recent times have brought lots of new challenges so the free phone line provides another way of getting in touch. It will also provide a source of friendly conversation and someone to listen.

**BODMIN
COMMUNITY
PHONE LINE**

0800 009 6737

The number is free to call and manned by local volunteers

8 AM - 9 PM (7 days a week)

As well as being able to provide those who need them with food parcels, the volunteers are able to provide information on other activities that are available in the Bodmin community as they get used to new guidelines and slowly more activities start up again.

If you want to update them on activities you are providing to the Bodmin community please email help@cultivatecornwall.com

BODMIN & DISTRICT CAMERA CLUB

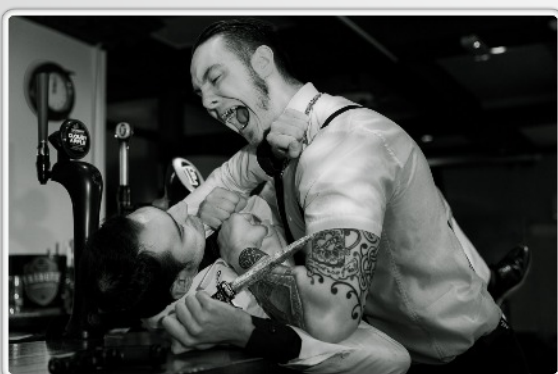
The club voluntary offers its photography services to local groups and organisations, in many cases acting as the official photographers of events (e.g. Bodmin Firework, Bodmin Riding and Heritage, Bodmin Carnival, and many more). This is win-win exchange, the members get to experience new challenges, while local groups and charities get photos of their special days. They are always welcoming to new members, whatever your skill level may be. Your first two meetings are free, if you like what they do then you can join from that point. Find more beautiful pictures and more about the club on their [Internet site](#) and [FaceBook](#) or [contact via email](#). They hold an annual photography competition, and the photos are normally displayed in the Shire Hall. As a normal print competition was not possible due to Covid-19 they ran a digital version. Shown below are the winning entries.



Gold - Paul Hockaday - Hands



Silver - Karen Shelsher - The Land Girl



Bronze - Robert Dawson - The Villain



Highly Commended - Paul Hockaday - Snowdrops



Commended - Karen Shelsher - Left Luggage



Commended - Tom Thorpe - a smile a day

SUCCESS WITH FUNDING

SUPPORTING OUR CHURCHES AND COMMUNITY

We are delighted to have three grants projects successfully funded as part of differing bids, to support the work of both the Bodmin Way, St Petroc's Church and the Bodmin Team Ministry.

Solar panel at Parish Centre

The first of our grant funding was to place a 10KWh solar panel system on the roof of St Petroc's Parish Centre. The donation was kindly awarded as part of the **British Airways Carbon Trust Fund**, helping to support lower emissions in our communities.



The project will save the parish centre an estimated £2000 in electricity costs plus additional feed-in tariff revenues on surplus electricity supplied back to the grid.

Low cost weddings and funerals

The second of our successes was from the Community Led Local Development (CLLD) fund. The funding supports low cost weddings and funerals within each of the Bodmin Team Ministry churches. Providing much needed equipment and materials to support the packages on offer as part of our growing support to the local community.



European Union
European Structural
and Investment Funds

Food and Fun bags

Our final grant was awarded to support the work of our Pioneer Ministry in delivering 'Food and Fun bags' to local communities in and around Bodmin. The bags will contain food and activities for children (and adults) to help brighten up the difficult months ahead whilst social distancing and limited schooling is in place.

Cornwall Community Foundation as part of its emergency appeal to support local communities through Covid-19 were the kind sponsors of this funding.

Cornwall
EMERGENCY APPEAL

We shall be championing this initiative over the next few months, providing food and fun bags as widely as possible. The initial impetus for this project came from a grant of £1300 awarded by the Brian Murtagh trust.

Other resources

We have also received free Office365 licenses from the Microsoft Foundation, which all charities can apply for, so if your organisation or members of your community are in need, sign up to this great offer. St Petroc's Church have been provided with a donation of FFP1 disposable face masks, FFP2 disposable masks, disposable nitrile and latex gloves and alcohol-based hand sanitiser, to support the safe opening of the church.

In total we have received over £20,000 in funding to support these initiatives to build sustainable, healthy and supportive activities for our local community through our churches.

The future?

Whilst lots of grant funders are closing their main funds at the moment, plenty of funders are looking to support the amazing amount of community efforts happening. In addition, this is a good time to begin planning for the future, so if a Church has a project idea in mind, contact Trevor Brittain at finance@bodminway.org to get your project in motion.

BEAUTIFUL PLACES

TO BRIGHTEN YOUR DAY

The Parish of Lanivet Church

Although not used locally and disputed by several, the church is named Saint Nivet after the daughter of Saint Bryahan of Wales and this is how its recorded by English Heritage.



There has been a religious presence on the site for at least 900 years, and the present building was built in the 15th century and restored in 1865. The Norman column which came from Bodmin Priory was retained as was the 14th Century octagonal Font during this restoration. It is popular belief that the church marks the centre of Cornwall with a 10th Century Celtic wheel Cross in the churchyard that is reputed to be the actually centre, opinion however differs on this. The churchyard also contains a 13th Century four-holed cross.

The church has a Tower to the west, which is a three-stage buttressed structure, and by Cornish standards is regarded as exceptionally high. It houses eight bells some of them dating from 1539.

During the restoration several wall paintings were discovered including the "St Sunday" painting of Christ, these were then painted over. Fortunately, the Rector of that time made sketches of the drawings which are shown on the west wall window ledge.

The east window, above the altar, installed in 1890, depicts the Incarnation, Crucifixion and Ascension. Several other windows commemorate local people as do many memorial plaques around the walls.

The organ is a "Tracker" organ, which is unusual, it was installed in 1871 and was restored in 1900.

The first known dedication of the altar was in 1318 and a rededication took place in 1338 and again after the restoration of 1865.

As you leave the church by the south door there is an ancient coped stone from the 5th or 6th century which was found near the south porch. A slate tablet to the right of this door records the names of all the Rectors since 1259.

A hotel in the village about a quarter mile from the Church sits on the site of the Benedictine Abbey of St Benet's, which was built in 1411, sadly today however only the tower remains reasonably intact.

Lanivet is a diverse village with many facilities, a shop, fish and chip takeaway/cafe, a community hall (The One for All), a junior school, a nursery school and a pub. The latter is called Lanivet Inn but known as 'The Panda', this is due to the connections with the giant Pandas of London Zoo.

During the second world war Lanivet grew all the bamboo needed to feed the Pandas as supplies were unable to be obtained from overseas. The villagers are proud of the service they gave on this issue.

There are three footpaths of note that go through the village and pass the church, the oldest, The Saints Way, runs from Padstow to Par and originally provided a route for pilgrims from Ireland going to France. Lanivet Church is considered the half way point on this route. The newer ones are The Celtic Way from St Germans to St Michael's Mount and the latest The Bodmin Way which connects the five Team churches of the area: St Petroc's (Bodmin), St Stephen (Nanstallon), Lanivet Parish Church, St Hydroc (Lanhydrock) and St Meubred (Cardinham).

Val and Robert Moore

CHURCH NEWS

Church Open for Private Prayer

One relaxation to the lockdown regulations is the opening of churches for private prayer. We still cannot hold worship services in church, but we can visit for prayer.

St Petroc's Church is open on Mondays between 10am and 2pm and on Thursdays between 12pm and 4pm. Coronavirus is still with us, so hygiene and social distancing measures will be necessary for the safety of us all. Entry is through the level access door. Chairs have been placed two meters apart, in the two chapels and chancel, so please do not move them. You may prefer to pray standing up, in front of a chair, or sitting down, on a chair. Please avoid touching the chair with your hands.

Unfortunately, it is not permitted to light a candle at the pricket stand at this time. The kitchen, toilets and main body of the church remain out of bounds.

Please take special care as you leave, as others might be entering. Priority is given to those people who are leaving the church.

Lanivet Parish Church is open for private prayer on Sundays between 10am and 4pm.

A prayer

Dear Lord, we thank you that we are now able to visit some of our churches for private prayer. We know we can pray anywhere and at any time, but there is also something special about being in a building that is steeped in centuries of prayer. Thank you for those who have worked to make the church ready for its opening. Bless those who feel drawn to church to pray. Amen.

Funeral Services in Church

We are pleased to be able to announce that from Monday 6th July, funerals will be able to take place again at St Petroc's Church Bodmin, St Stephen's Church Nanstallon and Lanivet Church, including our clergy, verger and organist. Social distancing and hygiene measures still apply. It is expected that St Meubred's Church Cardinham will be available for funerals later in July. We hope this will be a source of comfort to those who are grieving at this time.

If you are unable to attend a funeral, this [weblink](#) gives practical ways to show your respect.

Contact a priest and our bereavement listening service: Revd Paul Holley: 07470 192378 / paul.holley@bodminway.org



THANK YOU

Thank you for Cornwall and for everyone who calls it home
For our beautiful coastlines and countryside
Ancient pathways and rich heritage
Refuge, sanctuary and retreat in the clean air
Richness of spirit and kindness of heart.
With the onset of summer
We pray for protection, wisdom and calm
As balances are sought
Between fragile livelihoods
and vulnerable healthcare system
Between welcoming travellers weary
from coping with this crisis
And protecting the vulnerable
and maintaining a safe harbour
in this storm.

Amen



Picture courtesy of the [Diocese of Truro](#)



DIOCESE OF TRURO

DISCOVERING GOD'S KINGDOM
GROWING THE CHURCH

Thank you to everyone who contributed
to the richness of this edition. We look
forward to more great stories next time.

Dave Birch